

报告编号:

测试时间: 2002-1-1 1:13:42

灯具光度测试报告

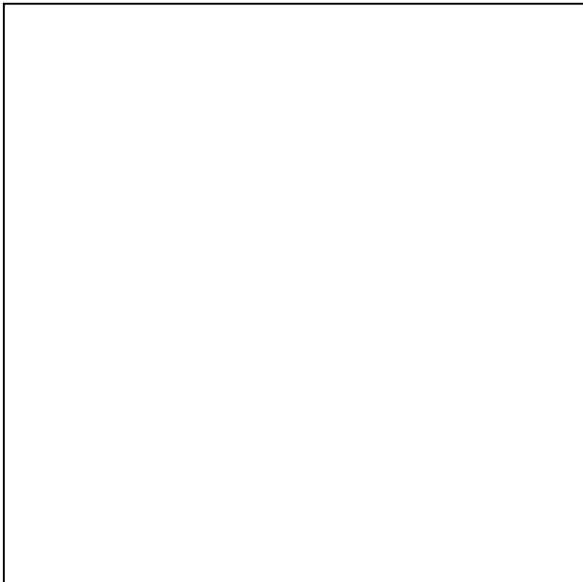
灯具属性

| | |
|--------------|-----------------|
| 生产工厂: 0 | 电压(V): 221.09 V |
| 灯具规格: | 电流(A): 0.0715 A |
| 光源规格: | 功率(W): 9.36 W |
| 发光面宽度: 80 mm | 功率因数: 0.5921 |
| 发光面长度: 80 mm | 光源光通量: 495.48 |
| 发光面高度: 80 mm | |

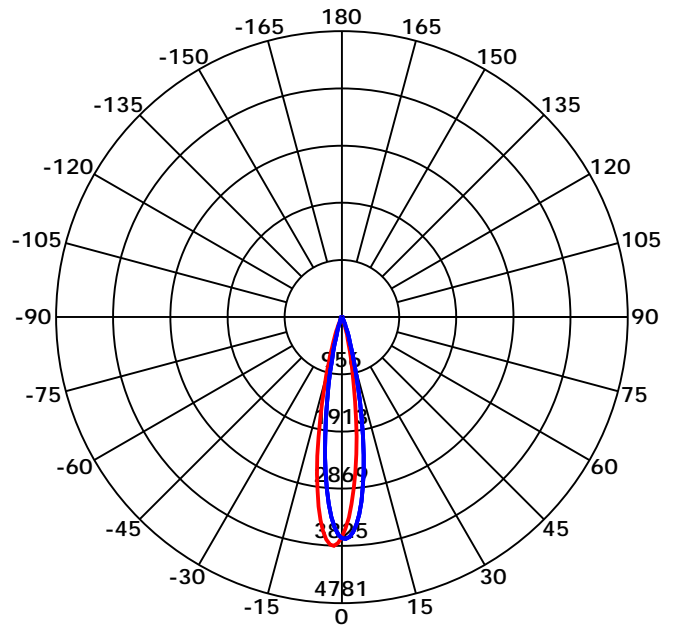
光度结果

| | |
|-------------------------------------|---------------------------------------|
| CIE 等级: Direct | 最大光强: 3825.12 cd |
| 灯具光通量: 495.4774 lm | 最大光强角: C=180 Gamma=2 |
| 下射光通比: 100.00% | 上射光通比: 0.00% |
| 灯具光效(LER): 52.91 lm/W | 灯具效率: 100.00% |
| 光束角(50%) C0-180,C90-270: 18.8,19.1 | 中心光强: 3674.83 cd |
| 视场角(10%) C0-180,C90-270: 34.7,34.9 | 有效光通量: 420.66 lm |
| 距高比S/MH C0-180,C90-270: 0.353,0.353 | 光通量ERP(φ use)120度: 495.48 lm |

灯具图片



光强分布曲线



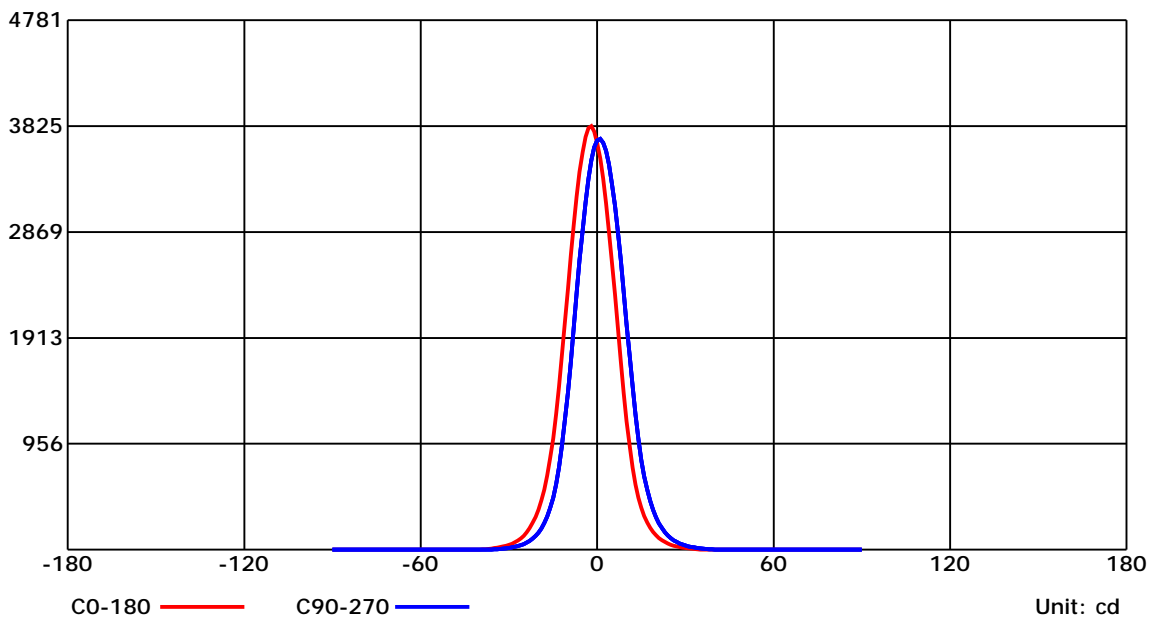
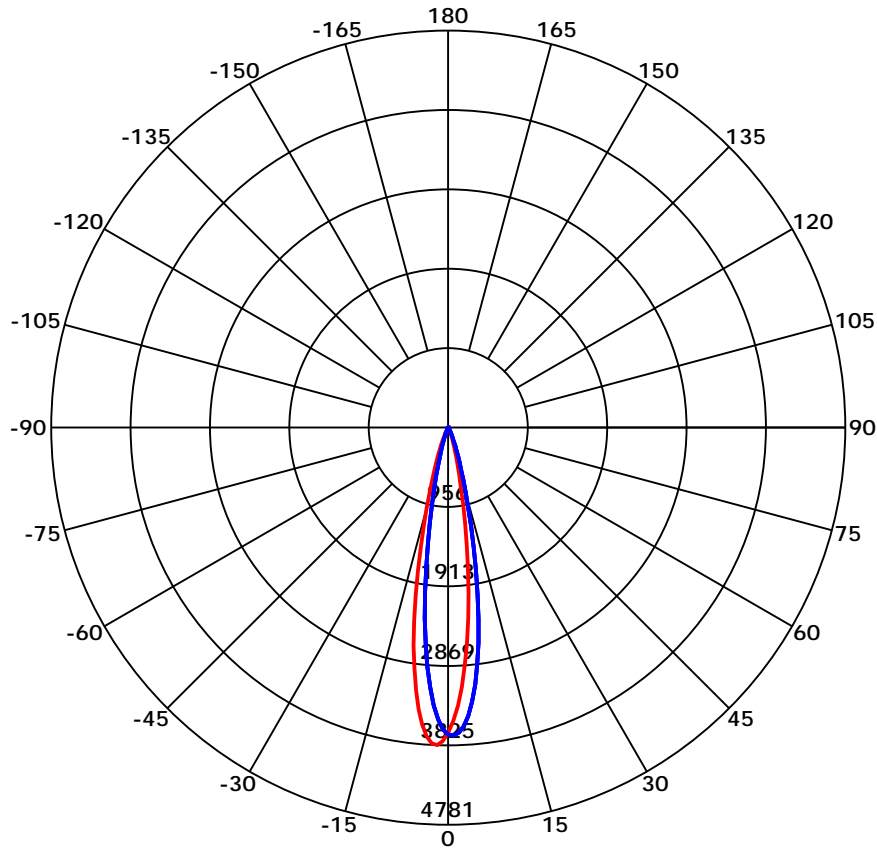
光束角(50%) C0-180,C90-270: 18.8 deg,19.1 deg

C0-180 ——— C90-270 ———

C角度范围: 0 - 360 Deg
 C角度间隔: 45.0 Deg
 测试速度: High
 环境温度:
 测试人员:
 测试日期: 2002-1-1 1:13:42

G角度范围: 0 - 90 Deg
 G角度间隔: 1.0 Deg
 测试系统: Huipu CPM-1800B Goniophotometer
 环境湿度:
 测试距离: 9.22 m
 备注:

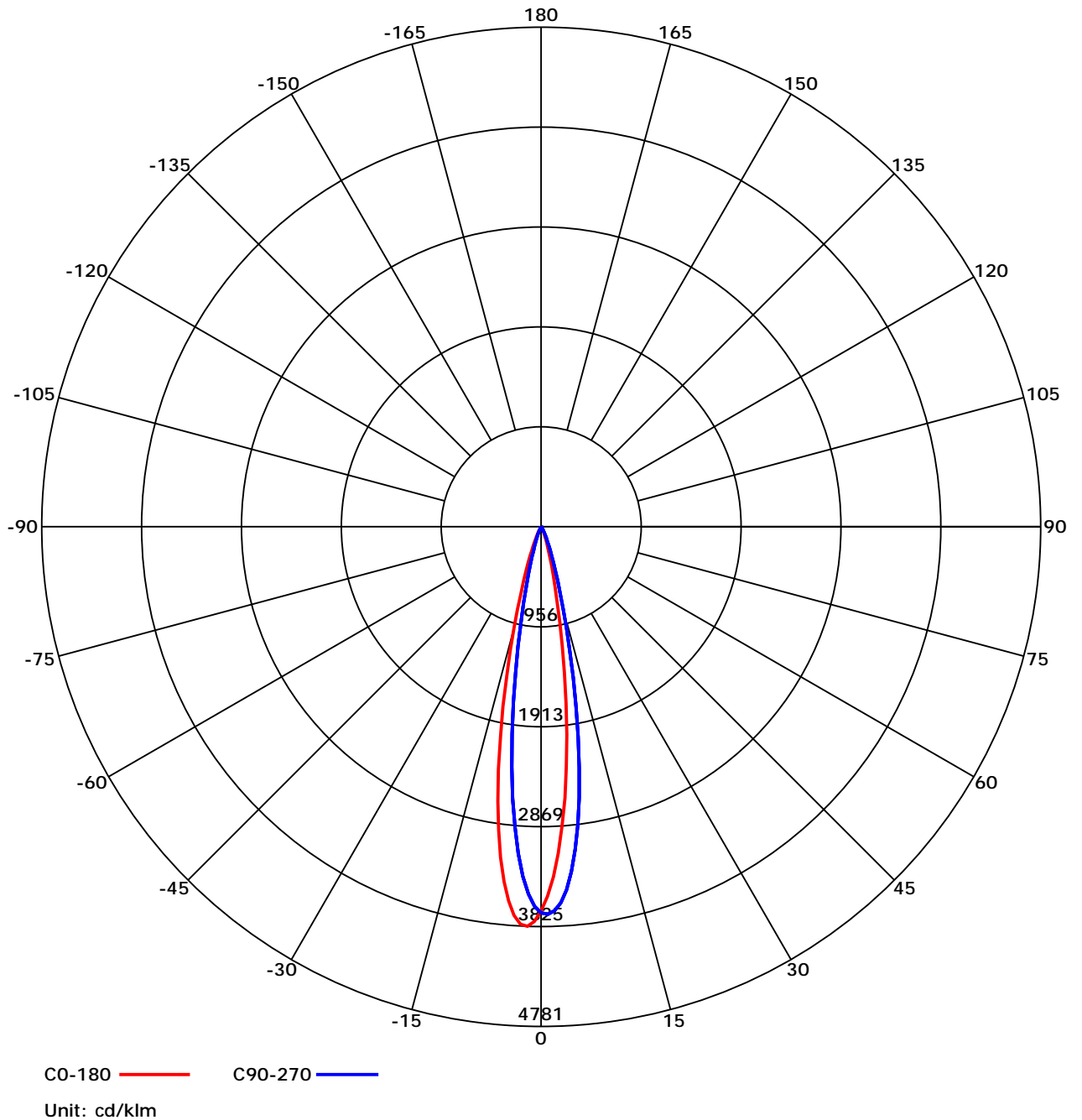
光强分布曲线



C角度范围: 0 - 360 Deg
 C角度间隔: 45.0 Deg
 测试速度: High
 环境温度:
 测试人员:
 测试日期: 2002-1-1 1:13:42

G角度范围: 0 - 90 Deg
 G角度间隔: 1.0 Deg
 测试系统: Huipu CPM-1800B Goniophotometer
 环境湿度:
 测试距离: 9.22 m
 备注:

光强分布曲线



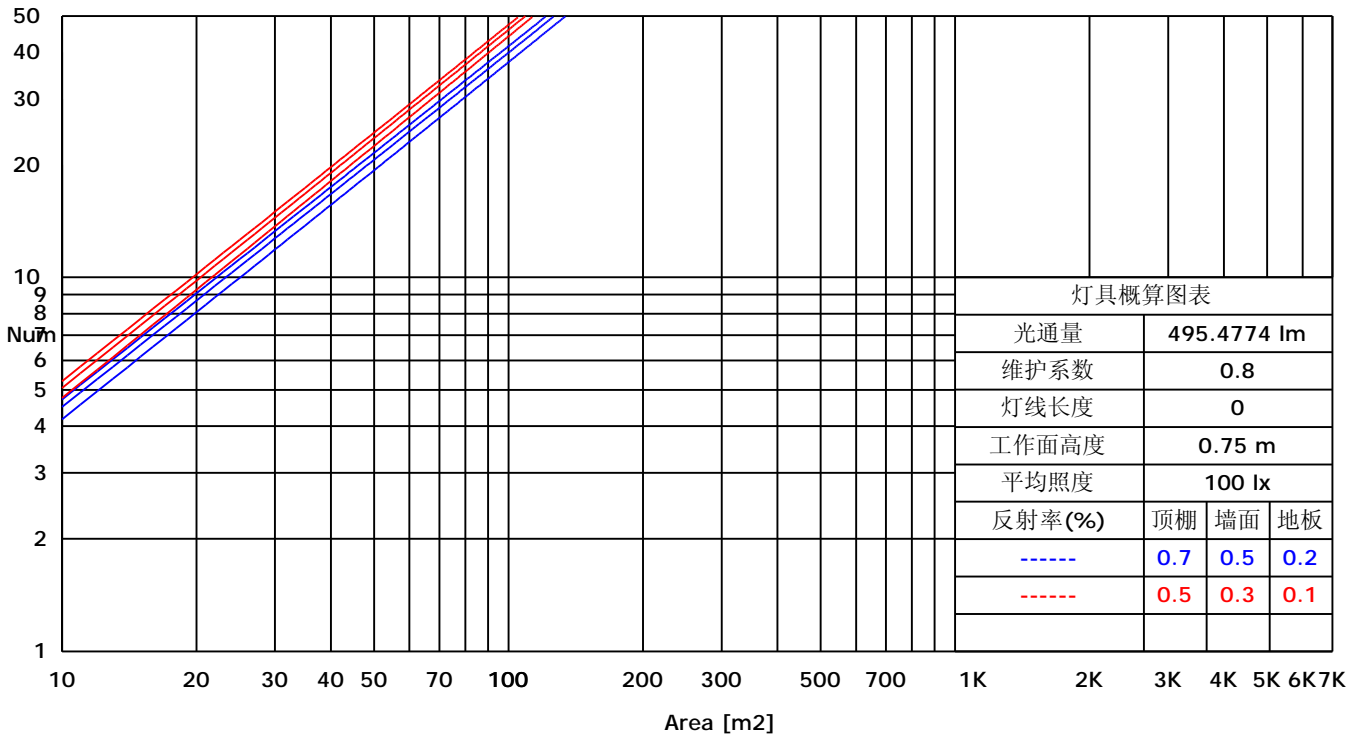
C角度范围: 0 - 360 Deg
 C角度间隔: 45.0 Deg
 测试速度: High
 环境温度:
 测试人员:
 测试日期: 2002-1-1 1:13:42

G角度范围: 0 - 90 Deg
 G角度间隔: 1.0 Deg
 测试系统: Huipu CPM-1800B Goniophotometer
 环境湿度:
 测试距离: 9.22 m
 备注:

利用系数图表(TM5)

| RHOCC | 80 | | | 70 | | | 50 | | | 30 | | | 10 | | | 0 |
|-------|--|------|------|------|------|------|------|------|------|------|------|------|------|------|------|------|
| RHOW | 50 | 30 | 10 | 50 | 30 | 10 | 50 | 30 | 10 | 50 | 30 | 10 | 50 | 30 | 10 | 0 |
| RCR | COEFFICIENTS OF UTILIZATION FOR RHOFC=20 | | | | | | | | | | | | | | | |
| 0 | 1.19 | 1.19 | 1.19 | 1.16 | 1.16 | 1.16 | 1.11 | 1.11 | 1.11 | 1.06 | 1.06 | 1.06 | 1.02 | 1.02 | 1.02 | 1.00 |
| 1 | 0.70 | 0.65 | 0.60 | 0.70 | 0.64 | 0.60 | 0.69 | 0.63 | 0.58 | 0.67 | 0.61 | 0.55 | 0.64 | 0.57 | 0.51 | 0.46 |
| 2 | 0.66 | 0.62 | 0.59 | 0.67 | 0.62 | 0.58 | 0.67 | 0.61 | 0.56 | 0.65 | 0.59 | 0.54 | 0.62 | 0.56 | 0.50 | 0.45 |
| 3 | 0.64 | 0.61 | 0.58 | 0.65 | 0.60 | 0.57 | 0.65 | 0.59 | 0.55 | 0.63 | 0.57 | 0.53 | 0.61 | 0.55 | 0.49 | 0.45 |
| 4 | 0.63 | 0.60 | 0.58 | 0.63 | 0.59 | 0.57 | 0.63 | 0.58 | 0.54 | 0.62 | 0.56 | 0.52 | 0.60 | 0.54 | 0.49 | 0.45 |
| 5 | 0.61 | 0.59 | 0.57 | 0.62 | 0.58 | 0.56 | 0.62 | 0.57 | 0.54 | 0.61 | 0.55 | 0.51 | 0.59 | 0.53 | 0.48 | 0.44 |
| 6 | 0.60 | 0.58 | 0.57 | 0.61 | 0.58 | 0.55 | 0.61 | 0.56 | 0.53 | 0.60 | 0.54 | 0.50 | 0.58 | 0.52 | 0.48 | 0.44 |
| 7 | 0.60 | 0.57 | 0.56 | 0.60 | 0.57 | 0.55 | 0.60 | 0.55 | 0.52 | 0.59 | 0.54 | 0.50 | 0.57 | 0.52 | 0.47 | 0.44 |
| 8 | 0.59 | 0.57 | 0.56 | 0.59 | 0.56 | 0.54 | 0.59 | 0.55 | 0.52 | 0.58 | 0.53 | 0.49 | 0.57 | 0.51 | 0.47 | 0.44 |
| 9 | 0.58 | 0.56 | 0.55 | 0.58 | 0.56 | 0.54 | 0.58 | 0.54 | 0.52 | 0.57 | 0.52 | 0.49 | 0.56 | 0.50 | 0.46 | 0.43 |
| 10 | 0.58 | 0.56 | 0.55 | 0.58 | 0.55 | 0.54 | 0.57 | 0.54 | 0.51 | 0.56 | 0.52 | 0.49 | 0.55 | 0.50 | 0.46 | 0.43 |

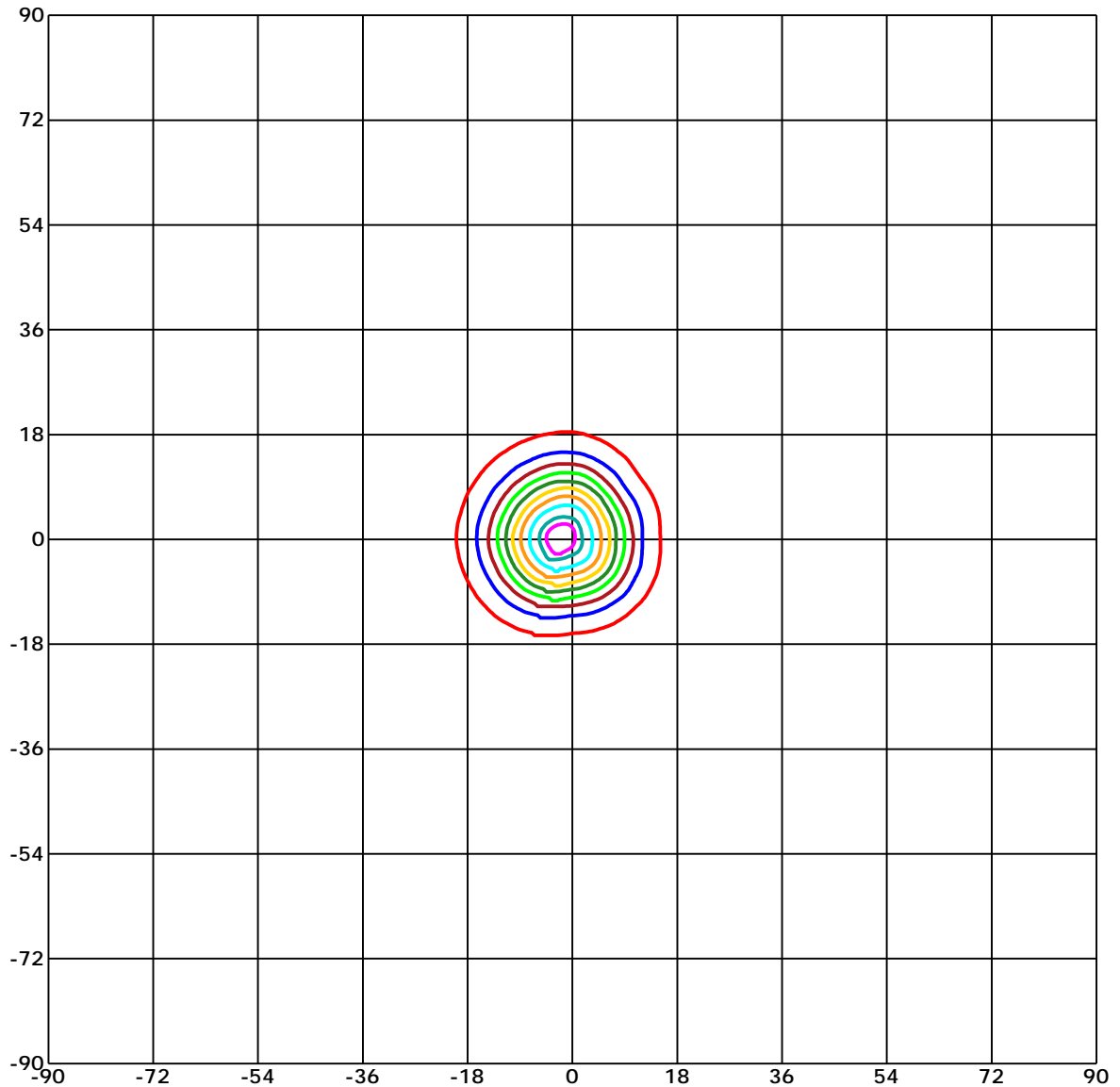
概算曲线



C角度范围: 0 - 360 Deg
 C角度间隔: 45.0 Deg
 测试速度: High
 环境温度:
 测试人员:
 测试日期: 2002-1-1 1:13:42

G角度范围: 0 - 90 Deg
 G角度间隔: 1.0 Deg
 测试系统: Huipu CPM-1800B Goniophotometer
 环境湿度:
 测试距离: 9.22 m
 备注:

矩形等光强曲线



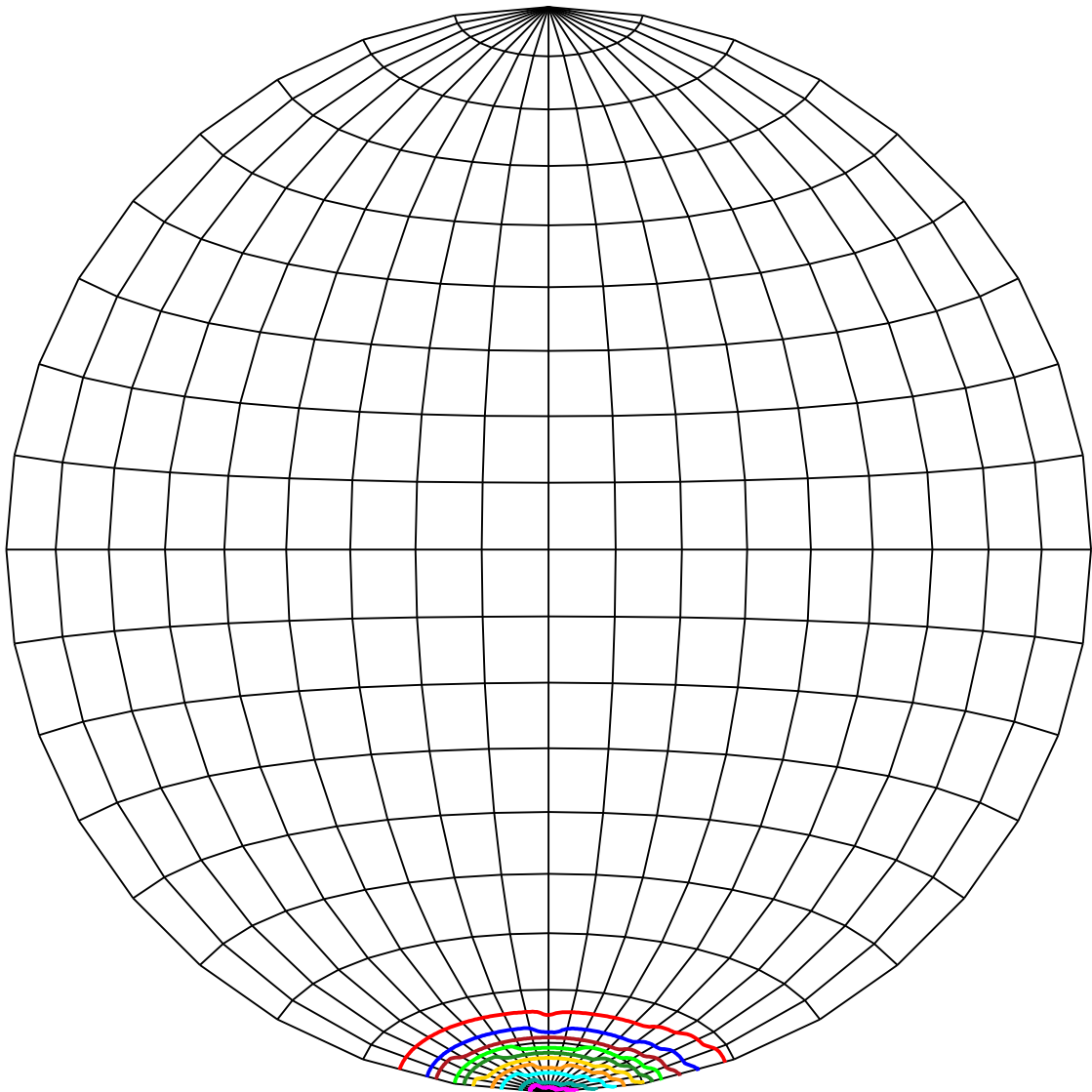
Unit of intensity:cd $I_{max}(100\%): 3825.123 \text{ cd}$

- | | |
|----------------------------|----------------------------|
| — 3633.867(95% I_{max}) | — 1912.562(50% I_{max}) |
| — 3442.611(90% I_{max}) | — 1530.049(40% I_{max}) |
| — 3060.099(80% I_{max}) | — 1147.537(30% I_{max}) |
| — 2677.586(70% I_{max}) | — 765.025(20% I_{max}) |
| — 2295.074(60% I_{max}) | — 382.512(10% I_{max}) |

C角度范围: 0 - 360 Deg
 C角度间隔: 45.0 Deg
 测试速度: High
 环境温度:
 测试人员:
 测试日期: 2002-1-1 1:13:42

G角度范围: 0 - 90 Deg
 G角度间隔: 1.0 Deg
 测试系统: Huipu CPM-1800B Goniophotometer
 环境湿度:
 测试距离: 9.22 m
 备注:

球面等光强曲线



Unit of intensity:cd I_{max}(100%): 3825.123 cd

- | | |
|----------------------------------|----------------------------------|
| — 3633.867(95%I _{max}) | — 1912.562(50%I _{max}) |
| — 3442.611(90%I _{max}) | — 1530.049(40%I _{max}) |
| — 3060.099(80%I _{max}) | — 1147.537(30%I _{max}) |
| — 2677.586(70%I _{max}) | — 765.025(20%I _{max}) |
| — 2295.074(60%I _{max}) | — 382.512(10%I _{max}) |

C角度范围: 0 - 360 Deg

C角度间隔: 45.0 Deg

测试速度: High

环境温度:

测试人员:

测试日期: 2002-1-1 1:13:42

G角度范围: 0 - 90 Deg

G角度间隔: 1.0 Deg

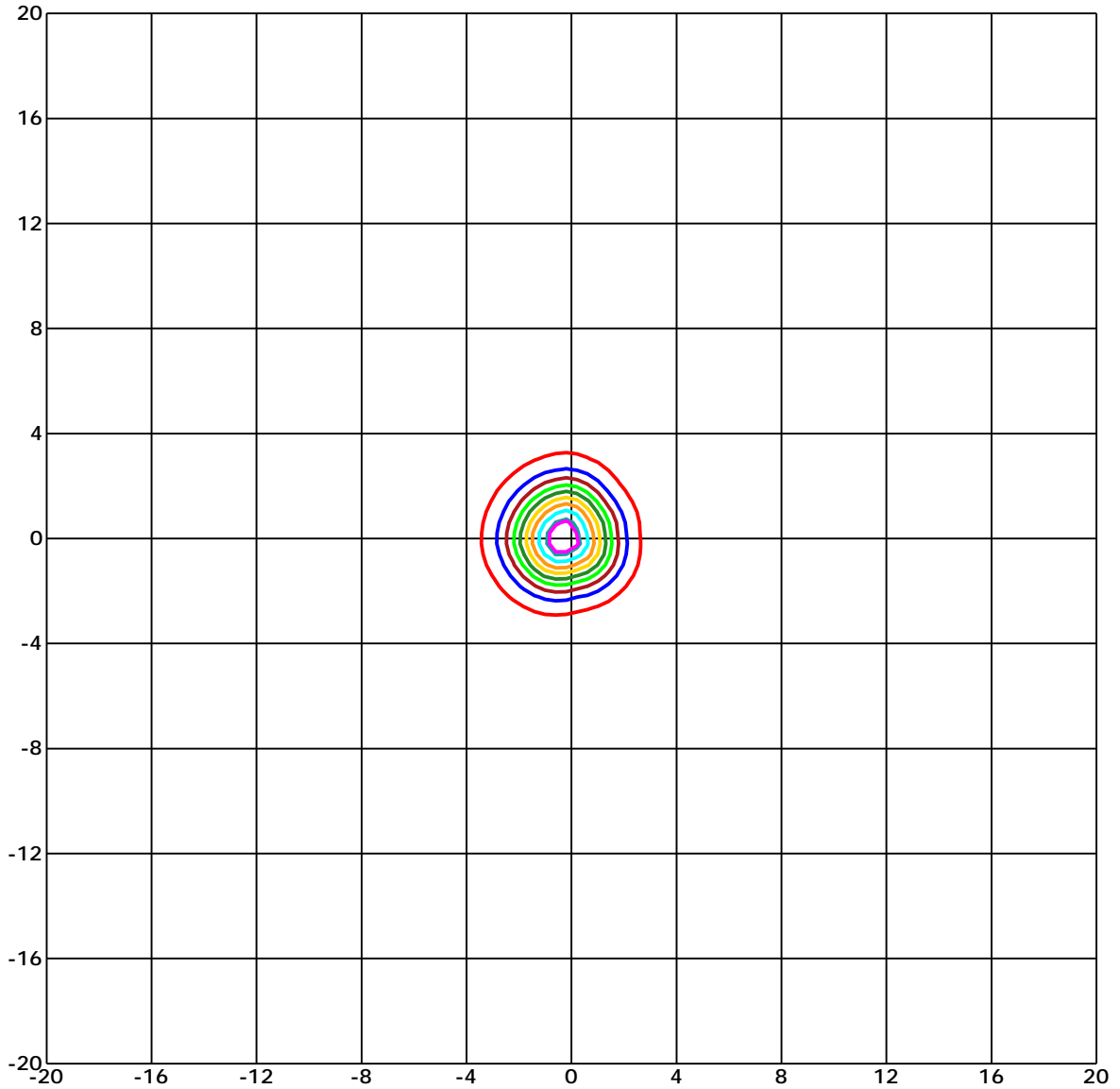
测试系统: Huipu CPM-1800B Goniophotometer

环境湿度:

测试距离: 9.22 m

备注:

平面等照度曲线



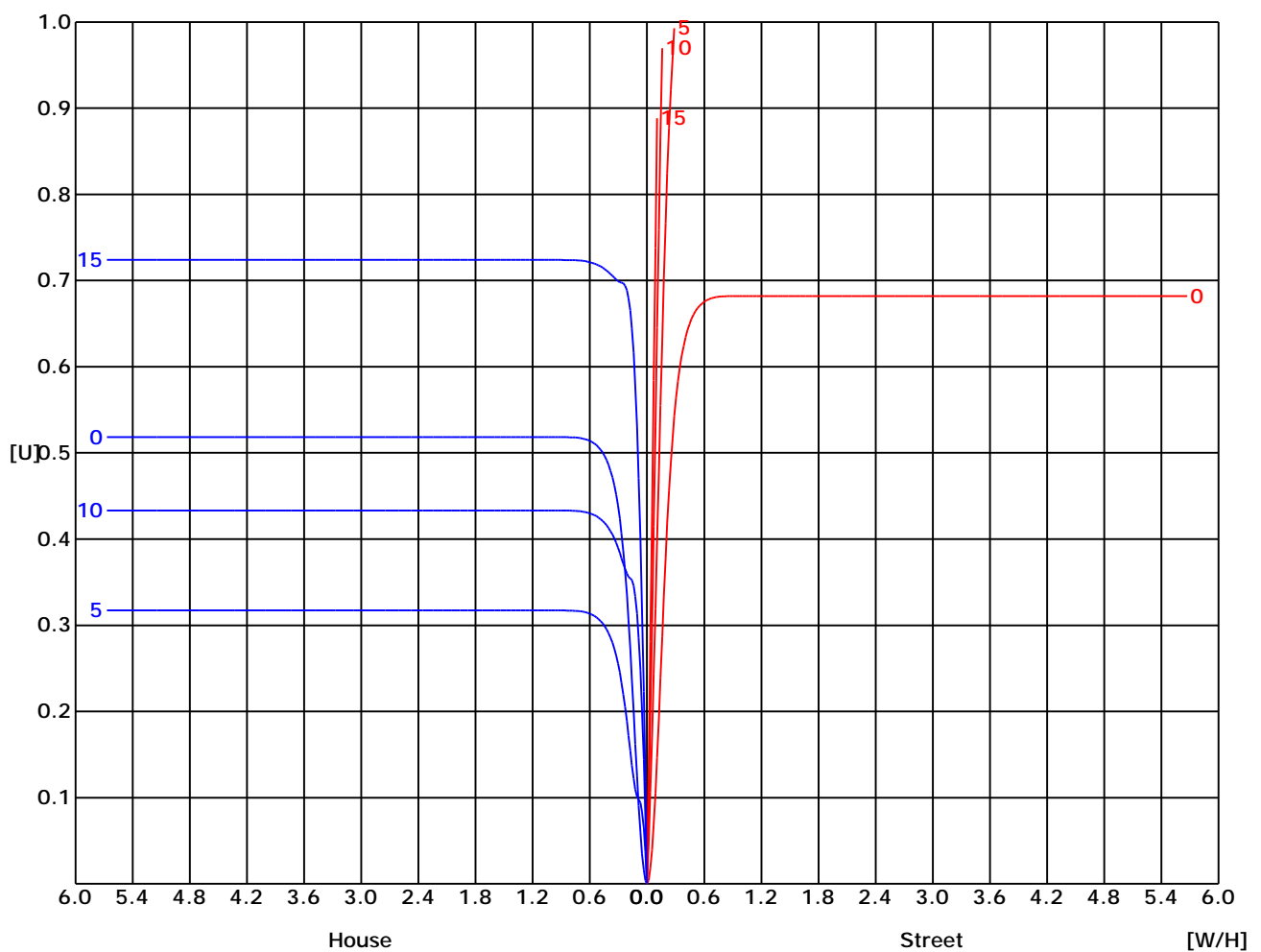
Unit of illumination: lx Height of plane: 10.0(m)/32.81(ft)

- | | |
|-------------------------------|-------------------------------|
| — 35.127(1%E _{max}) | — 19.091(0%E _{max}) |
| — 34.363(1%E _{max}) | — 15.273(0%E _{max}) |
| — 30.545(1%E _{max}) | — 11.454(0%E _{max}) |
| — 26.727(1%E _{max}) | — 7.636(0%E _{max}) |
| — 22.909(1%E _{max}) | — 3.818(0%E _{max}) |

C角度范围: 0 - 360 Deg
 C角度间隔: 45.0 Deg
 测试速度: High
 环境温度:
 测试人员:
 测试日期: 2002-1-1 1:13:42

G角度范围: 0 - 90 Deg
 G角度间隔: 1.0 Deg
 测试系统: Huipu CPM-1800B Goniophotometer
 环境湿度:
 测试距离: 9.22 m
 备注:

路灯利用系数曲线

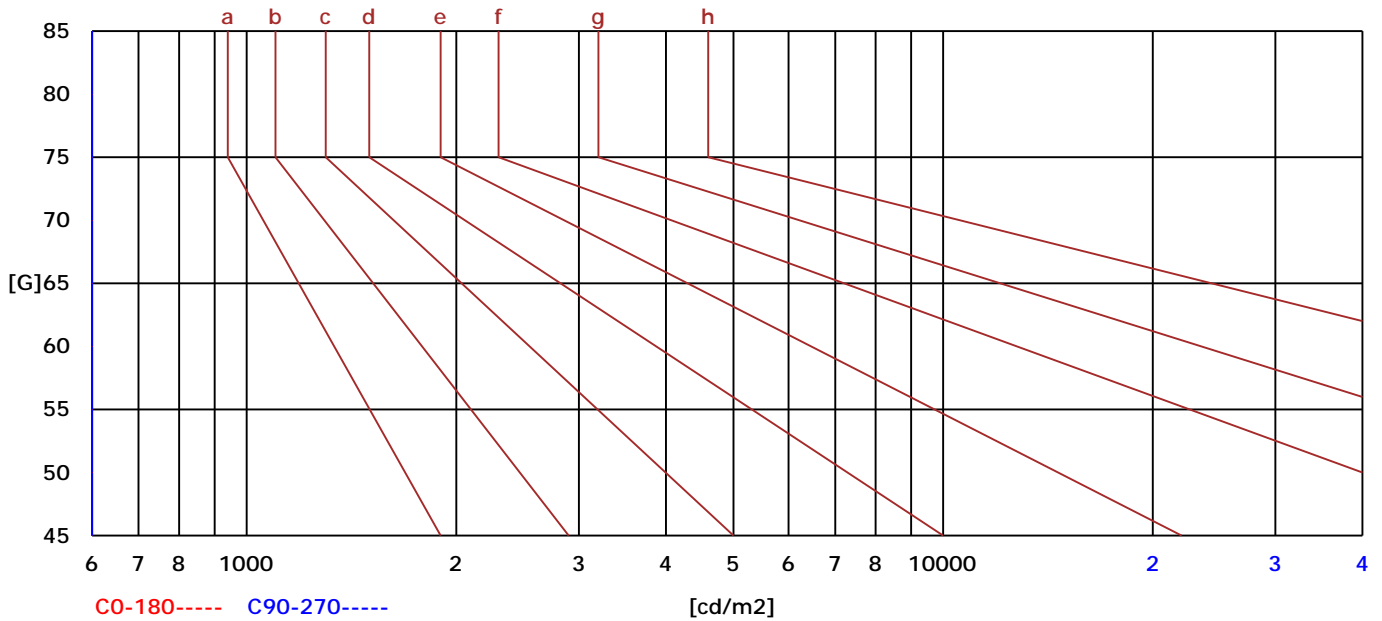


C角度范围: 0 - 360 Deg
 C角度间隔: 45.0 Deg
 测试速度: High
 环境温度:
 测试人员:
 测试日期: 2002-1-1 1:13:42

G角度范围: 0 - 90 Deg
 G角度间隔: 1.0 Deg
 测试系统: Huipu CPM-1800B Goniophotometer
 环境湿度:
 测试距离: 9.22 m
 备注:

亮度限制曲线

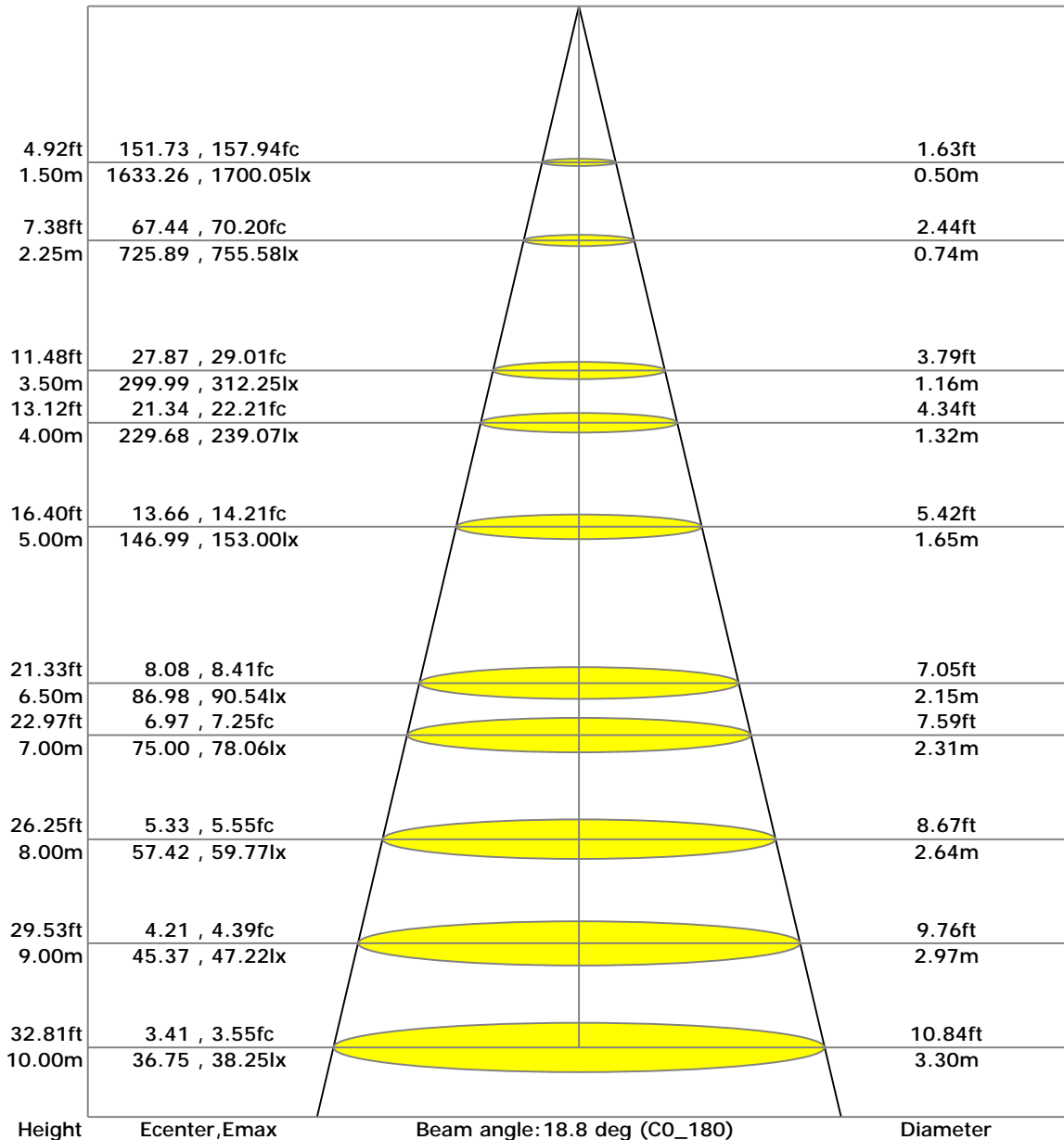
| C/G | 45 | 50 | 55 | 60 | 65 | 70 | 75 | 80 | 85 |
|--------|---------|-------------|------|------|-------|-------|-------|-------|-------|
| C0 | 0 | 0 | 0 | 0 | 0 | 0 | 0 | 0 | 0 |
| C90 | 0 | 0 | 0 | 0 | 0 | 0 | 0 | 0 | 0 |
| Dazzle | Quality | Illuminance | --- | --- | --- | --- | --- | --- | --- |
| 1.15 | A | 2000 | 1000 | 500 | <=300 | | | | |
| 1.5 | B | | 2000 | 1000 | 500 | <=300 | | | |
| 1.85 | C | | | 2000 | 1000 | 500 | <=300 | | |
| 2.2 | D | | | | 2000 | 1000 | 500 | <=300 | |
| 2.55 | E | | | | | 2000 | 1000 | 500 | <=300 |
| --- | --- | a | b | c | d | e | f | g | h |



C角度范围: 0 - 360 Deg
 C角度间隔: 45.0 Deg
 测试速度: High
 环境温度:
 测试人员:
 测试日期: 2002-1-1 1:13:42

G角度范围: 0 - 90 Deg
 G角度间隔: 1.0 Deg
 测试系统: Huipu CPM-1800B Goniophotometer
 环境湿度:
 测试距离: 9.22 m
 备注:

照度距离曲线



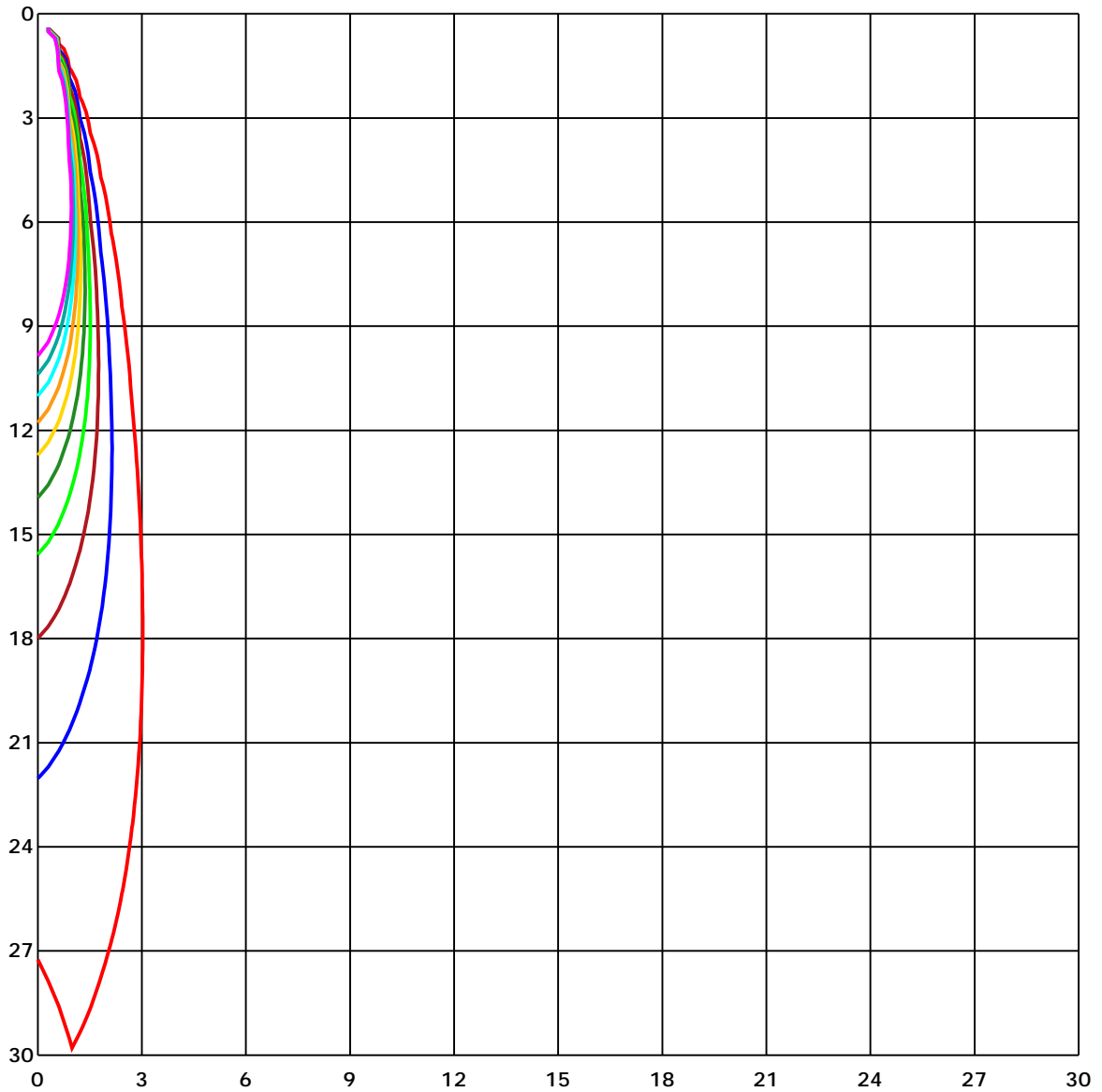
C角度范围: 0 - 360 Deg
 C角度间隔: 45.0 Deg
 测试速度: High
 环境温度:
 测试人员:
 测试日期: 2002-1-1 1:13:42

G角度范围: 0 - 90 Deg
 G角度间隔: 1.0 Deg
 测试系统: Huipu CPM-1800B Goniophotometer
 环境湿度:
 测试距离: 9.22 m
 备注:

UGR(Unified Glare Rating) TABLE

| | | | | | | | | | | |
|-------------|---------------------|------|------|------|------|-----------------------|------|------|------|------|
| 天花板反射比 | 70 | 70 | 50 | 50 | 30 | 70 | 70 | 50 | 50 | 30 |
| 墙面反射比 | 50 | 30 | 50 | 30 | 30 | 50 | 30 | 50 | 30 | 30 |
| 地面反射比 | 20 | 20 | 20 | 20 | 20 | 20 | 20 | 20 | 20 | 20 |
| 房间尺寸 X Y | 向前 (Viewed Endwise) | | | | | 交叉 (Viewed Crosswise) | | | | |
| 2H 2H | 1.05 | 1.12 | 1.25 | 1.31 | 1.55 | 1.05 | 1.12 | 1.25 | 1.31 | 1.55 |
| 3H | 1.02 | 1.10 | 1.23 | 1.29 | 1.54 | 1.02 | 1.10 | 1.23 | 1.29 | 1.54 |
| 4H | 1.01 | 1.09 | 1.22 | 1.29 | 1.54 | 1.01 | 1.09 | 1.22 | 1.29 | 1.54 |
| 6H | 1.00 | 1.08 | 1.21 | 1.28 | 1.53 | 1.00 | 1.08 | 1.21 | 1.28 | 1.53 |
| 8H | 0.99 | 1.07 | 1.21 | 1.27 | 1.53 | 0.99 | 1.07 | 1.21 | 1.27 | 1.53 |
| 12H | 0.98 | 1.06 | 1.20 | 1.27 | 1.53 | 0.98 | 1.06 | 1.20 | 1.27 | 1.53 |
| 4H 2H | 1.01 | 1.09 | 1.22 | 1.29 | 1.54 | 1.01 | 1.09 | 1.22 | 1.29 | 1.54 |
| 3H | 0.98 | 1.06 | 1.20 | 1.27 | 1.53 | 0.98 | 1.06 | 1.20 | 1.27 | 1.53 |
| 4H | 0.96 | 1.04 | 1.19 | 1.26 | 1.52 | 0.96 | 1.04 | 1.19 | 1.26 | 1.52 |
| 6H | 0.94 | 1.02 | 1.18 | 1.25 | 1.51 | 0.94 | 1.02 | 1.18 | 1.25 | 1.51 |
| 8H | 0.93 | 1.01 | 1.18 | 1.24 | 1.51 | 0.93 | 1.01 | 1.18 | 1.24 | 1.51 |
| 12H | 0.92 | 1.00 | 1.17 | 1.23 | 1.51 | 0.92 | 1.00 | 1.17 | 1.23 | 1.51 |
| 8H 4H | 0.99 | 1.07 | 1.21 | 1.27 | 1.53 | 0.99 | 1.07 | 1.21 | 1.27 | 1.53 |
| 6H | 0.90 | 0.98 | 1.16 | 1.22 | 1.50 | 0.90 | 0.98 | 1.16 | 1.22 | 1.50 |
| 8H | 0.89 | 0.97 | 1.15 | 1.22 | 1.50 | 0.89 | 0.97 | 1.15 | 1.22 | 1.50 |
| 12H | 0.87 | 0.95 | 1.14 | 1.21 | 1.49 | 0.87 | 0.95 | 1.14 | 1.21 | 1.49 |
| 12H 4H | 0.92 | 1.00 | 1.17 | 1.23 | 1.51 | 0.92 | 1.00 | 1.17 | 1.23 | 1.51 |
| 6H | 0.89 | 0.97 | 1.15 | 1.22 | 1.50 | 0.89 | 0.97 | 1.15 | 1.22 | 1.50 |

空间等照度曲线



Unit of illumination: lx

- | | |
|----------|----------|
| — 37.853 | — 18.927 |
| — 34.068 | — 15.141 |
| — 30.283 | — 11.356 |
| — 26.497 | — 7.571 |
| — 22.712 | — 3.785 |

C角度范围: 0 - 360 Deg
 C角度间隔: 45.0 Deg
 测试速度: High
 环境温度:
 测试人员:
 测试日期: 2002-1-1 1:13:42

G角度范围: 0 - 90 Deg
 G角度间隔: 1.0 Deg
 测试系统: Huipu CPM-1800B Goniophotometer
 环境湿度:
 测试距离: 9.22 m
 备注:

报告编号:

测试时间: 2002-1-1 1:13:42

光强分布数据

| Gamma/C | C0 | C45 | C90 | C135 | C180 | C225 | C270 | C315 | C360 | |
|---------|---------|---------|---------|---------|---------|---------|---------|---------|---------|--|
| G0 | 3674.83 | 3668.88 | 3694.55 | 3748.28 | 3674.83 | 3668.88 | 3694.55 | 3748.28 | 3674.83 | |
| G1 | 3534.65 | 3565.85 | 3708.58 | 3795.37 | 3776.58 | 3728.98 | 3633.94 | 3652.05 | 3534.65 | |
| G2 | 3351.12 | 3428.64 | 3674.83 | 3794.44 | 3825.12 | 3734.25 | 3515.95 | 3510.59 | 3351.12 | |
| G3 | 3128.65 | 3248.77 | 3601.72 | 3738.5 | 3807.27 | 3686.99 | 3348.91 | 3322.13 | 3128.65 | |
| G4 | 2870.82 | 3030.38 | 3480.5 | 3618.04 | 3726.0 | 3581.4 | 3134.35 | 3094.31 | 2870.82 | |
| G5 | 2605.76 | 2777.65 | 3311.25 | 3445.56 | 3590.84 | 3418.53 | 2885.95 | 2833.16 | 2605.76 | |
| G6 | 2305.68 | 2526.11 | 3105.61 | 3237.29 | 3411.9 | 3206.52 | 2613.07 | 2558.58 | 2305.68 | |
| G7 | 2004.92 | 2223.91 | 2870.65 | 2989.75 | 3188.33 | 2957.1 | 2315.46 | 2258.33 | 2004.92 | |
| G8 | 1703.91 | 1927.65 | 2618.51 | 2719.16 | 2931.09 | 2668.24 | 2005.18 | 1955.79 | 1703.91 | |
| G9 | 1416.41 | 1631.48 | 2332.04 | 2445.52 | 2660.42 | 2376.16 | 1695.83 | 1658.85 | 1416.41 | |
| G10 | 1160.03 | 1352.48 | 2037.23 | 2147.31 | 2354.56 | 2068.85 | 1419.81 | 1383.17 | 1160.03 | |
| G11 | 933.82 | 1095.84 | 1746.92 | 1853.52 | 2043.09 | 1752.62 | 1163.85 | 1138.77 | 933.82 | |
| G12 | 741.78 | 880.18 | 1477.28 | 1581.41 | 1756.27 | 1465.38 | 938.49 | 913.93 | 741.78 | |
| G13 | 588.34 | 700.64 | 1221.74 | 1318.31 | 1471.41 | 1207.03 | 743.48 | 726.91 | 588.34 | |
| G14 | 469.67 | 561.74 | 1001.57 | 1090.32 | 1222.25 | 982.19 | 590.04 | 576.27 | 469.67 | |
| G15 | 379.31 | 449.35 | 810.39 | 891.48 | 1005.05 | 798.57 | 467.97 | 459.47 | 379.31 | |
| G16 | 304.93 | 362.31 | 661.37 | 722.32 | 821.1 | 644.02 | 374.97 | 367.07 | 304.93 | |
| G17 | 244.82 | 290.81 | 538.53 | 587.32 | 667.4 | 519.23 | 298.97 | 296.51 | 244.82 | |
| G18 | 198.58 | 235.64 | 439.58 | 480.04 | 542.44 | 419.35 | 240.57 | 237.34 | 198.58 | |
| G19 | 160.75 | 190.33 | 358.91 | 391.04 | 445.1 | 339.61 | 192.71 | 193.31 | 160.75 | |
| G20 | 129.89 | 154.38 | 292.09 | 317.59 | 362.9 | 271.94 | 154.29 | 155.48 | 129.89 | |
| G21 | 105.07 | 125.73 | 238.02 | 257.32 | 295.32 | 217.96 | 123.69 | 126.75 | 105.07 | |
| G22 | 85.09 | 102.95 | 194.58 | 206.57 | 239.72 | 175.63 | 98.95 | 102.95 | 85.09 | |
| G23 | 68.86 | 83.39 | 157.78 | 165.85 | 193.39 | 142.64 | 79.65 | 84.5 | 68.86 | |
| G24 | 56.02 | 68.26 | 128.87 | 132.7 | 156.67 | 115.19 | 63.84 | 68.86 | 56.02 | |
| G25 | 45.22 | 55.43 | 104.99 | 106.01 | 125.73 | 93.59 | 50.84 | 56.19 | 45.22 | |
| G26 | 36.72 | 45.14 | 85.26 | 84.5 | 101.59 | 76.08 | 41.14 | 45.9 | 36.72 | |
| G27 | 29.5 | 36.38 | 69.37 | 67.07 | 82.29 | 62.23 | 32.98 | 37.83 | 29.5 | |
| G28 | 23.8 | 29.41 | 56.87 | 53.47 | 67.07 | 50.67 | 26.35 | 31.11 | 23.8 | |
| G29 | 18.87 | 23.63 | 46.24 | 42.5 | 54.24 | 41.4 | 20.74 | 25.16 | 18.87 | |
| G30 | 15.05 | 18.96 | 37.91 | 33.66 | 44.29 | 34.09 | 16.58 | 20.57 | 15.05 | |
| G31 | 11.56 | 14.88 | 30.86 | 26.18 | 35.87 | 27.63 | 12.75 | 16.92 | 11.56 | |
| G32 | 8.59 | 11.56 | 25.08 | 20.4 | 28.82 | 22.44 | 9.61 | 13.35 | 8.59 | |
| G33 | 6.21 | 8.67 | 20.06 | 15.39 | 23.04 | 17.94 | 6.8 | 10.54 | 6.21 | |
| G34 | 4.08 | 6.04 | 15.9 | 11.22 | 18.19 | 14.37 | 4.42 | 7.99 | 4.08 | |
| G35 | 2.21 | 4.08 | 12.24 | 7.57 | 13.94 | 11.05 | 2.38 | 5.87 | 2.21 | |
| G36 | 0.68 | 2.13 | 9.44 | 4.59 | 10.46 | 8.25 | 0.77 | 4.17 | 0.68 | |

C角度范围: 0 - 360 Deg
 C角度间隔: 45.0 Deg
 测试速度: High
 环境温度:
 测试人员:
 测试日期: 2002-1-1 1:13:42

G角度范围: 0 - 90 Deg
 G角度间隔: 1.0 Deg
 测试系统: Huipu CPM-1800B Goniophotometer
 环境湿度:
 测试距离: 9.22 m
 备注:

报告编号:

测试时间: 2002-1-1 1:13:42

光强分布数据(Continue 1)

| Gamma/C | C0 | C45 | C90 | C135 | C180 | C225 | C270 | C315 | C360 |
|---------|-----|-----|------|------|------|------|------|------|------|
| G37 | 0.0 | 0.6 | 6.72 | 1.96 | 7.31 | 5.78 | 0.0 | 2.72 | 0.0 |
| G38 | 0.0 | 0.0 | 4.59 | 0.34 | 4.85 | 4.0 | 0.0 | 1.96 | 0.0 |
| G39 | 0.0 | 0.0 | 2.98 | 0.0 | 3.15 | 2.47 | 0.0 | 1.28 | 0.0 |
| G40 | 0.0 | 0.0 | 2.04 | 0.0 | 1.96 | 1.53 | 0.0 | 0.85 | 0.0 |
| G41 | 0.0 | 0.0 | 1.36 | 0.0 | 1.36 | 1.02 | 0.0 | 0.51 | 0.0 |
| G42 | 0.0 | 0.0 | 1.02 | 0.0 | 1.02 | 0.77 | 0.0 | 0.17 | 0.0 |
| G43 | 0.0 | 0.0 | 0.6 | 0.0 | 0.68 | 0.43 | 0.0 | 0.09 | 0.0 |
| G44 | 0.0 | 0.0 | 0.26 | 0.0 | 0.51 | 0.09 | 0.0 | 0.0 | 0.0 |
| G45 | 0.0 | 0.0 | 0.09 | 0.0 | 0.17 | 0.0 | 0.0 | 0.0 | 0.0 |
| G46 | 0.0 | 0.0 | 0.0 | 0.0 | 0.09 | 0.0 | 0.0 | 0.0 | 0.0 |
| G47 | 0.0 | 0.0 | 0.0 | 0.0 | 0.0 | 0.0 | 0.0 | 0.0 | 0.0 |
| G48 | 0.0 | 0.0 | 0.0 | 0.0 | 0.0 | 0.0 | 0.0 | 0.0 | 0.0 |
| G49 | 0.0 | 0.0 | 0.0 | 0.0 | 0.0 | 0.0 | 0.0 | 0.0 | 0.0 |
| G50 | 0.0 | 0.0 | 0.0 | 0.0 | 0.0 | 0.0 | 0.0 | 0.0 | 0.0 |
| G51 | 0.0 | 0.0 | 0.0 | 0.0 | 0.0 | 0.0 | 0.0 | 0.0 | 0.0 |
| G52 | 0.0 | 0.0 | 0.0 | 0.0 | 0.0 | 0.0 | 0.0 | 0.0 | 0.0 |
| G53 | 0.0 | 0.0 | 0.0 | 0.0 | 0.0 | 0.0 | 0.0 | 0.0 | 0.0 |
| G54 | 0.0 | 0.0 | 0.0 | 0.0 | 0.0 | 0.0 | 0.0 | 0.0 | 0.0 |
| G55 | 0.0 | 0.0 | 0.0 | 0.0 | 0.0 | 0.0 | 0.0 | 0.0 | 0.0 |
| G56 | 0.0 | 0.0 | 0.0 | 0.0 | 0.0 | 0.0 | 0.0 | 0.0 | 0.0 |
| G57 | 0.0 | 0.0 | 0.0 | 0.0 | 0.0 | 0.0 | 0.0 | 0.0 | 0.0 |
| G58 | 0.0 | 0.0 | 0.0 | 0.0 | 0.0 | 0.0 | 0.0 | 0.0 | 0.0 |
| G59 | 0.0 | 0.0 | 0.0 | 0.0 | 0.0 | 0.0 | 0.0 | 0.0 | 0.0 |
| G60 | 0.0 | 0.0 | 0.0 | 0.0 | 0.0 | 0.0 | 0.0 | 0.0 | 0.0 |
| G61 | 0.0 | 0.0 | 0.0 | 0.0 | 0.0 | 0.0 | 0.0 | 0.0 | 0.0 |
| G62 | 0.0 | 0.0 | 0.0 | 0.0 | 0.0 | 0.0 | 0.0 | 0.0 | 0.0 |
| G63 | 0.0 | 0.0 | 0.0 | 0.0 | 0.0 | 0.0 | 0.0 | 0.0 | 0.0 |
| G64 | 0.0 | 0.0 | 0.0 | 0.0 | 0.0 | 0.0 | 0.0 | 0.0 | 0.0 |
| G65 | 0.0 | 0.0 | 0.0 | 0.0 | 0.0 | 0.0 | 0.0 | 0.0 | 0.0 |
| G66 | 0.0 | 0.0 | 0.0 | 0.0 | 0.0 | 0.0 | 0.0 | 0.0 | 0.0 |
| G67 | 0.0 | 0.0 | 0.0 | 0.0 | 0.0 | 0.0 | 0.0 | 0.0 | 0.0 |
| G68 | 0.0 | 0.0 | 0.0 | 0.0 | 0.0 | 0.0 | 0.0 | 0.0 | 0.0 |
| G69 | 0.0 | 0.0 | 0.0 | 0.0 | 0.0 | 0.0 | 0.0 | 0.0 | 0.0 |
| G70 | 0.0 | 0.0 | 0.0 | 0.0 | 0.0 | 0.0 | 0.0 | 0.0 | 0.0 |
| G71 | 0.0 | 0.0 | 0.0 | 0.0 | 0.0 | 0.0 | 0.0 | 0.0 | 0.0 |
| G72 | 0.0 | 0.0 | 0.0 | 0.0 | 0.0 | 0.0 | 0.0 | 0.0 | 0.0 |
| G73 | 0.0 | 0.0 | 0.0 | 0.0 | 0.0 | 0.0 | 0.0 | 0.0 | 0.0 |

C角度范围: 0 - 360 Deg
 C角度间隔: 45.0 Deg
 测试速度: High
 环境温度:
 测试人员:
 测试日期: 2002-1-1 1:13:42

G角度范围: 0 - 90 Deg
 G角度间隔: 1.0 Deg
 测试系统: Huipu CPM-1800B Goniophotometer
 环境湿度:
 测试距离: 9.22 m
 备注:

